

ROYAL ALBATROSS CORPORATE/ PRIVATE CHARTER ROUTES



ROYAL ALBATROSS CRUISING IN SINGAPORE

DEPARTURE LOCATIONS:

- | | |
|---------------------------|----------------------------|
| 1 RESORTS WORLD SENTOSA | 4 VIVOCITY PROMENADE |
| 2 MARINA AT KEPPEL BAY | 5 ONE DEGREE 15 MARINA |
| 3 SINGAPORE CRUISE CENTRE | 6 MARINA BAY CRUISE CENTRE |

Possible sailing routes in Singapore are shown below. Sailing routes can be adapted to suit client needs and may vary depending on tide & wind conditions.

SHORT CRUISE/DINING & SAILING

A relaxing cruise to Lazarus Bay **A**. Taking the Royal Albatross on a short sailing cruise transports the event from being onboard a unique luxurious Tall ship into a sailing adventure never forgotten. Guests can witness the professional crew operating the traditional rig of four masts, with hundreds of ropes and blocks, raising up to 22 sails. All done by hand and muscle power. We can lay anchor in the sheltered waters of Lazarus surrounded by golden beach and enjoy dining in tropical tranquility.

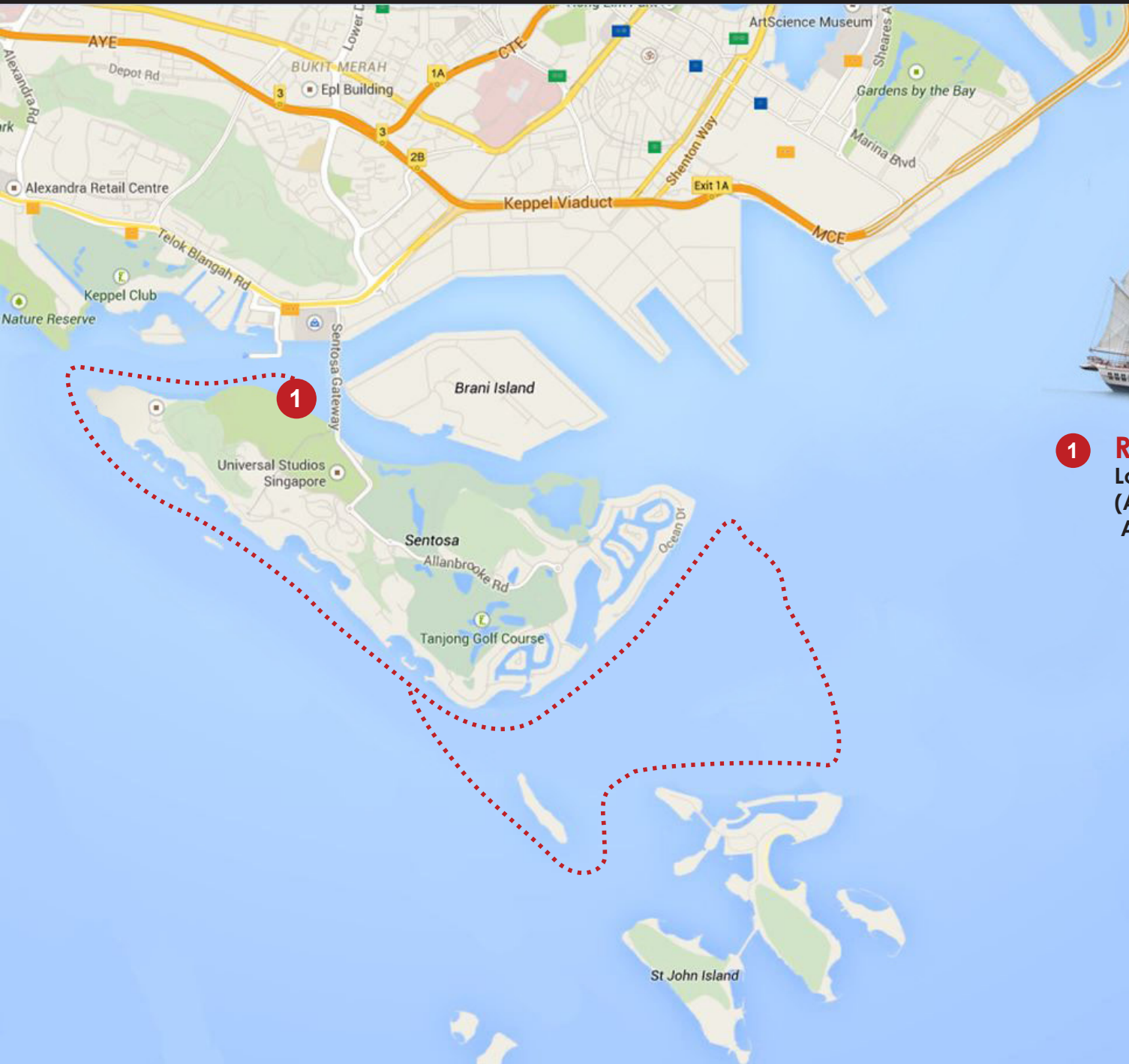
LONGER CRUISE ALONG EAST COAST

Aside from the amazing views and points of interest seen from the ship, the guest will see the breathtaking view of the entire Singapore Cityscape & Garden by the Bay, **B** Marina Bay **C** and as far as Bedok Jetty **D**.

SOUTHERN ISLAND CRUISE

Sailing around and through this cluster of small island **E**, away from the hustle and bustle of city life, gives both hosts and guests a rare opportunity to effortlessly drift into the relaxing comfort of the luxurious Royal Albatross whilst taking in the exhilaration of being aboard a Tall Ship weaving through diverse tropical islands.

ROYAL ALBATROSS SUNSET SAIL - CITY VIEWS & DINNER CRUISE ROUTE



1 ROYAL ALBATROSS
Location: Resorts World Sentosa
(Adjacent to S.E.A Aquarium and
Adventure Cove Waterpark)